

## Touch Display Computer / Panel PC

Model: DL-DM700x

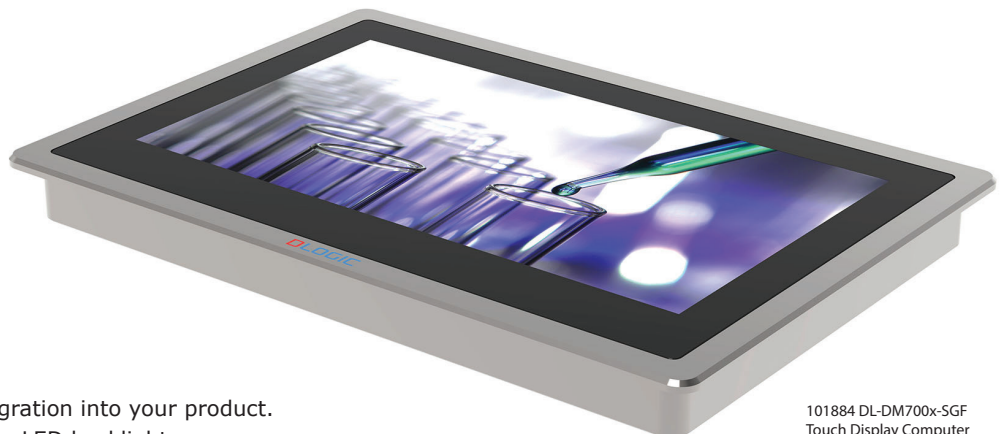


- ◆ Appliances & Vending
- ◆ Industrial Control
- ◆ Marine & Trucking
- ◆ Laboratory Equipment
- ◆ Food Processing
- ◆ Healthcare & Medical
- ◆ Harsh Environment

The most comprehensive all-in-one Touch Display Computer solution on the market

Our Touch Display Computers / Panel PCs are slim attractive all-in-one human interface solution ready for use in your application. They are designed for rapid implementation into industrial equipment, appliances, vending machines, marine, trucking, healthcare and are suitable for indoor, outdoor and harsh environments. DLOGIC Touch Display Computers integrates a color display, a projected capacitive touch sensor and an embedded computer into a stainless-steel housing with an aluminium frame creating a solid rugged assembly protecting the sensitive parts. They come with many standard interfaces and are configured with Linux ready for loading and running your applications. Our Touch Display Computer provide a cost effective and fast track to equip your product with state of the art touch-based user interfaces and enhanced embedded computing power.

- Fast time to market.
- Simple integration.
- Low development risk.
- Guaranteed > 7 years supply.



101884 DL-DM700x-SGF  
Touch Display Computer

### Key Features

- Touch Display Computers ready for integration into your product.
- IPS TFT LCD display with high brightness LED backlight.
- Slim metal housing with a range of high reliability standard interfaces.
- Software Board Support Package, HTML5, JAVA, QT, 2D, 3D Graphics and Video Playback.
- Tailored mechanical mounting and integration solutions.
- Simple addition of custom interface extensions.
- Optional optically bonded 4mm safety glass solutions.
- Supported by a highly skilled engineering team.